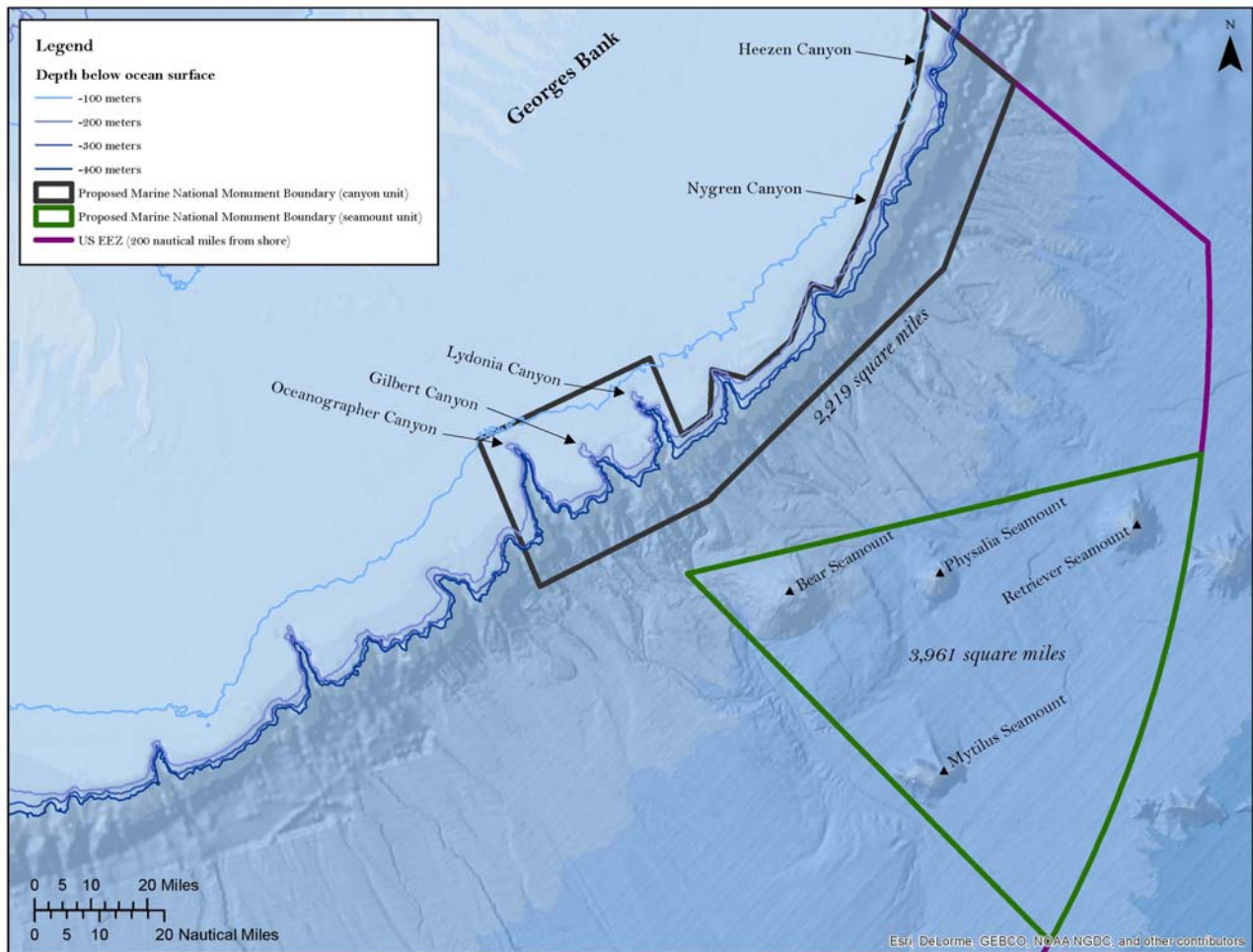


## Map of Proposed Monument Designation



### Canyons Unit (using North American Datum 1983)

LONGITUDE	LATITUDE
-66.15720109	40.99449146
-66.58040097	40.59589155
-67.57800066	40.20699165
-68.21200045	40.12199168
-68.26800042	40.5269916
-67.62800062	40.59999157
-67.60096477	40.38801777
-67.49019671	40.41519671
-67.43774197	40.52475784
-67.33333349	40.47702935
-67.1518927	40.53750011
-67.02558054	40.65891401
-66.96109778	40.62640184
-66.79700089	40.75799152
-66.48200098	41.06599145
-66.35930101	41.23259141
-66.15720109	40.99449146

### Seamounts Unit\*

LONGITUDE	LATITUDE
-66.93142365	38.86613312
-67.7221216	40.0438509
-65.94585459	39.93958175

\* between -65.94585459, 39.93958175 and -66.93142365, 38.86613312, the seaward line follows the EEZ, which is a curved arc.